

Supplementary results

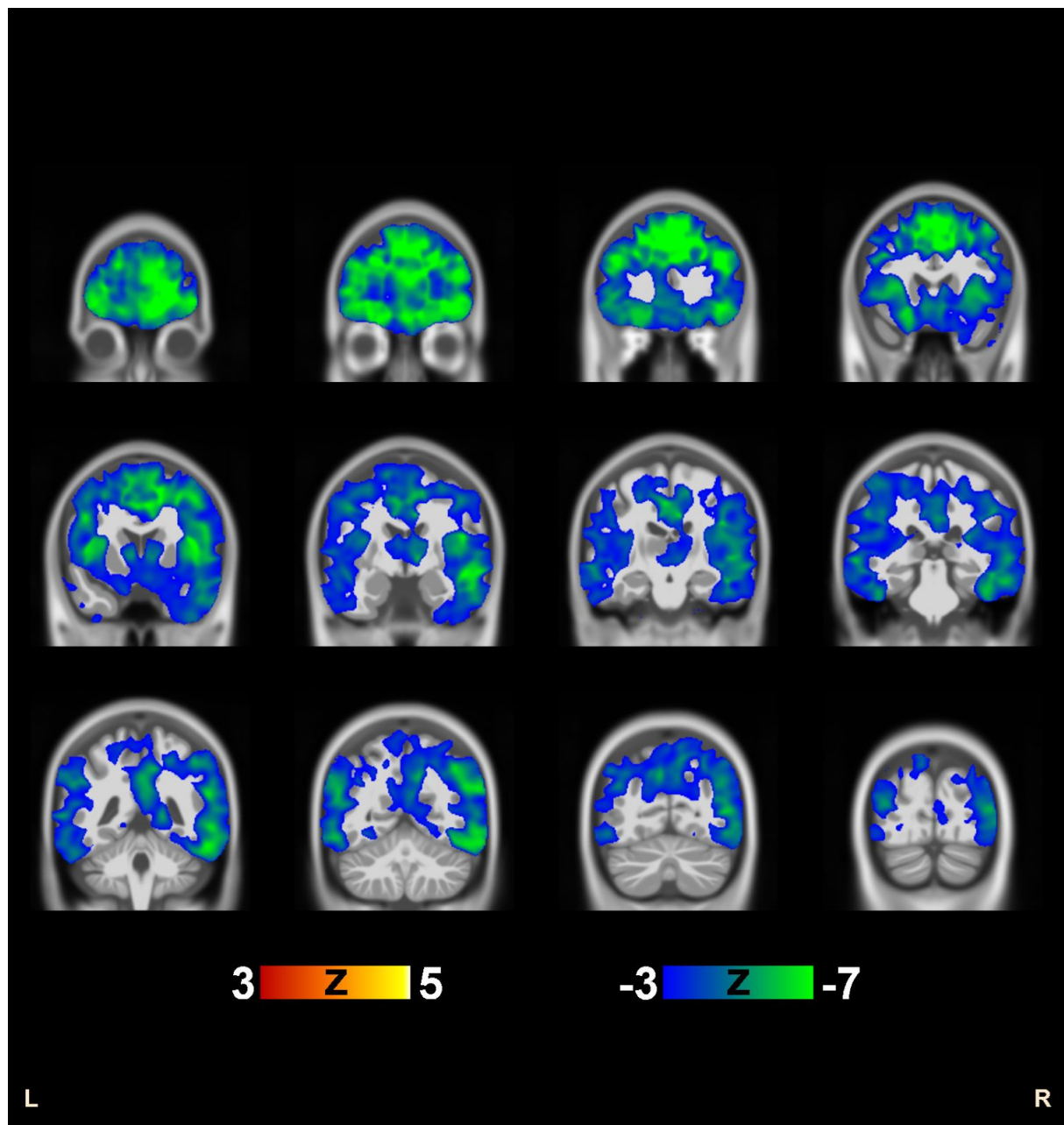


Figure 3 b: Coronal view of the image shown in Figure 3.

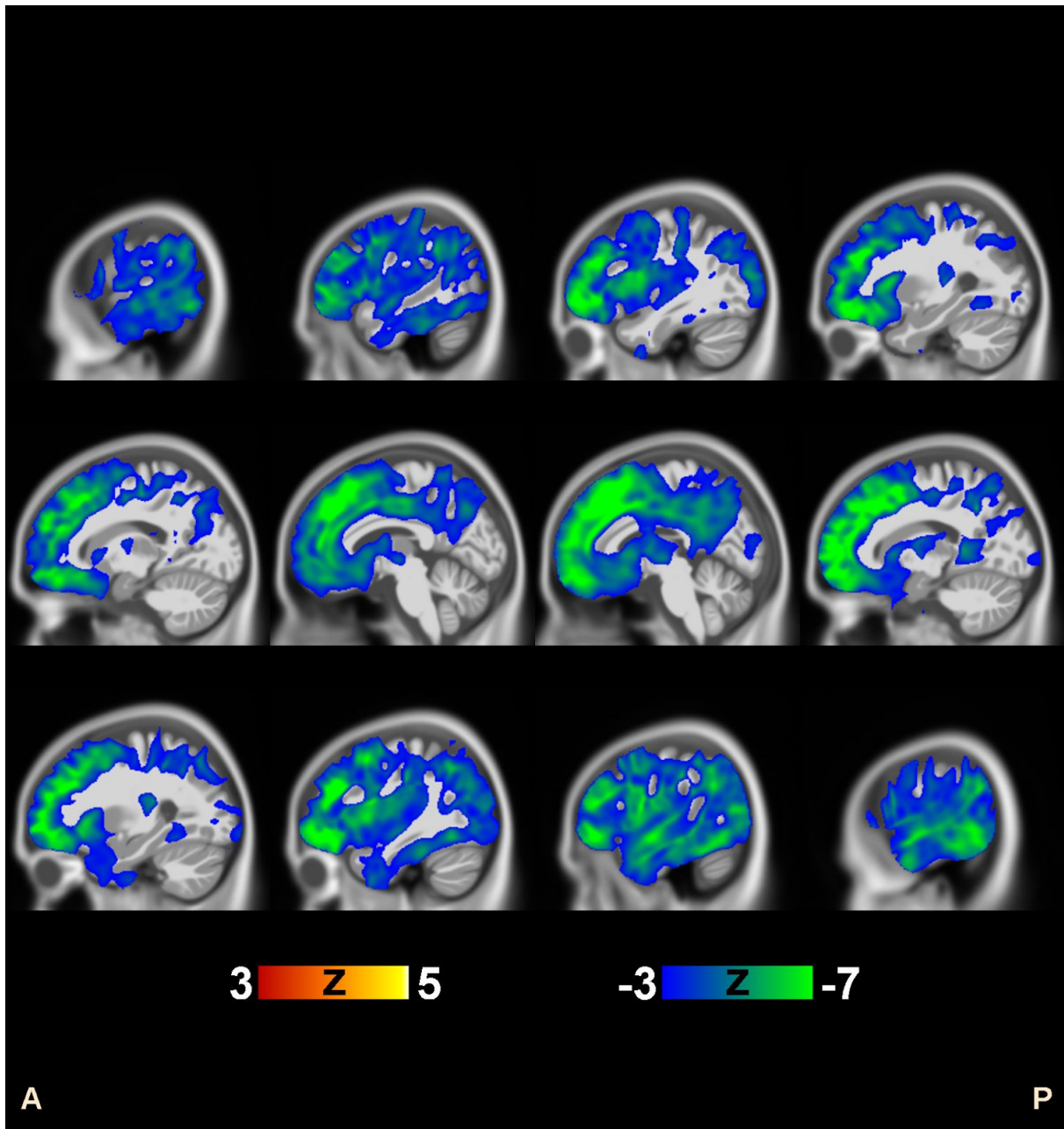


Figure 3 c: Sagittal view of the image shown in Figure 3.

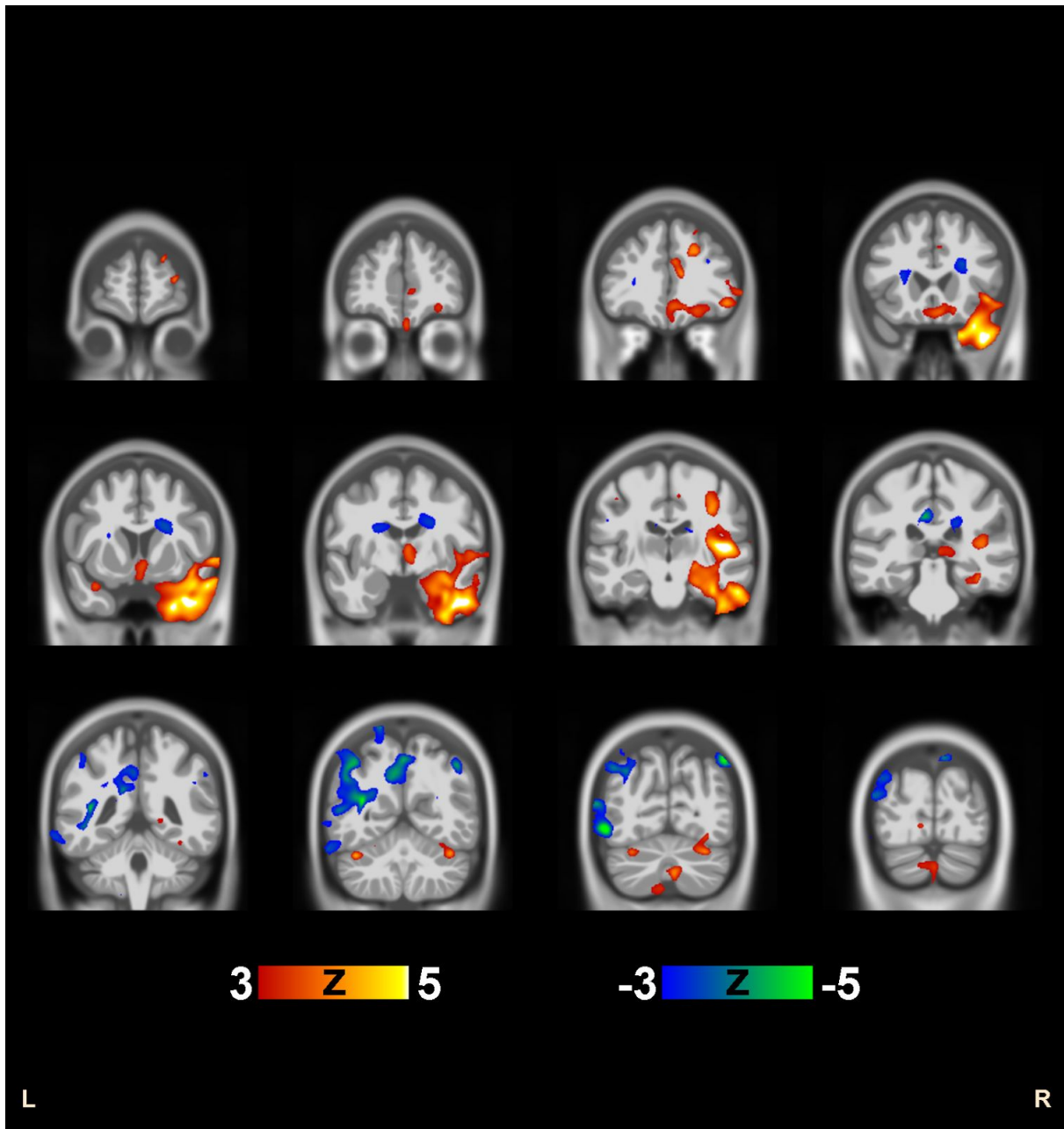


Figure 4 b: Coronal view of the image shown in Figure 4.

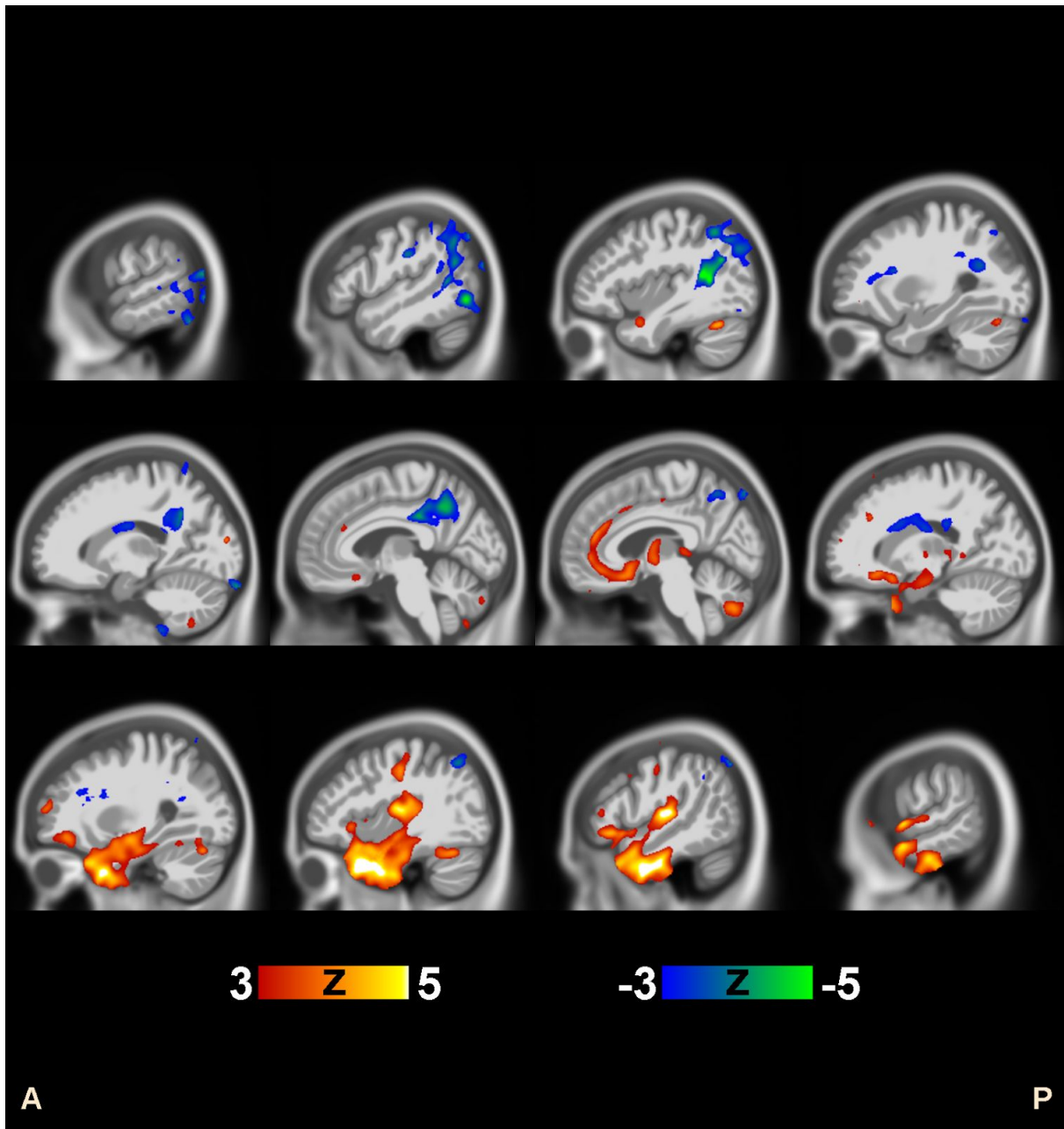


Figure 4 c: Sagittal view of the image shown in Figure 4.

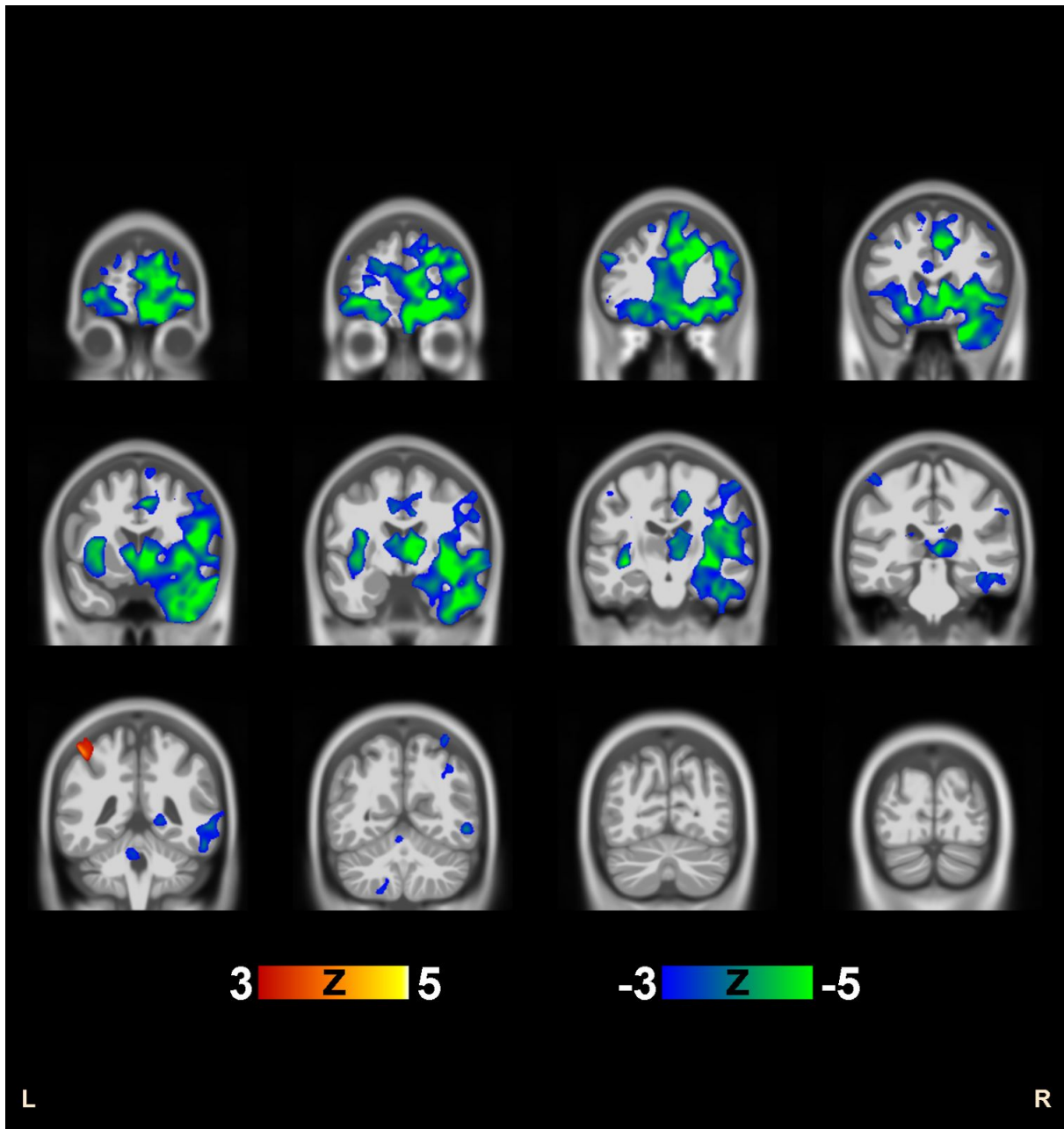


Figure 5 b: Coronal view of the image shown in Figure 5.

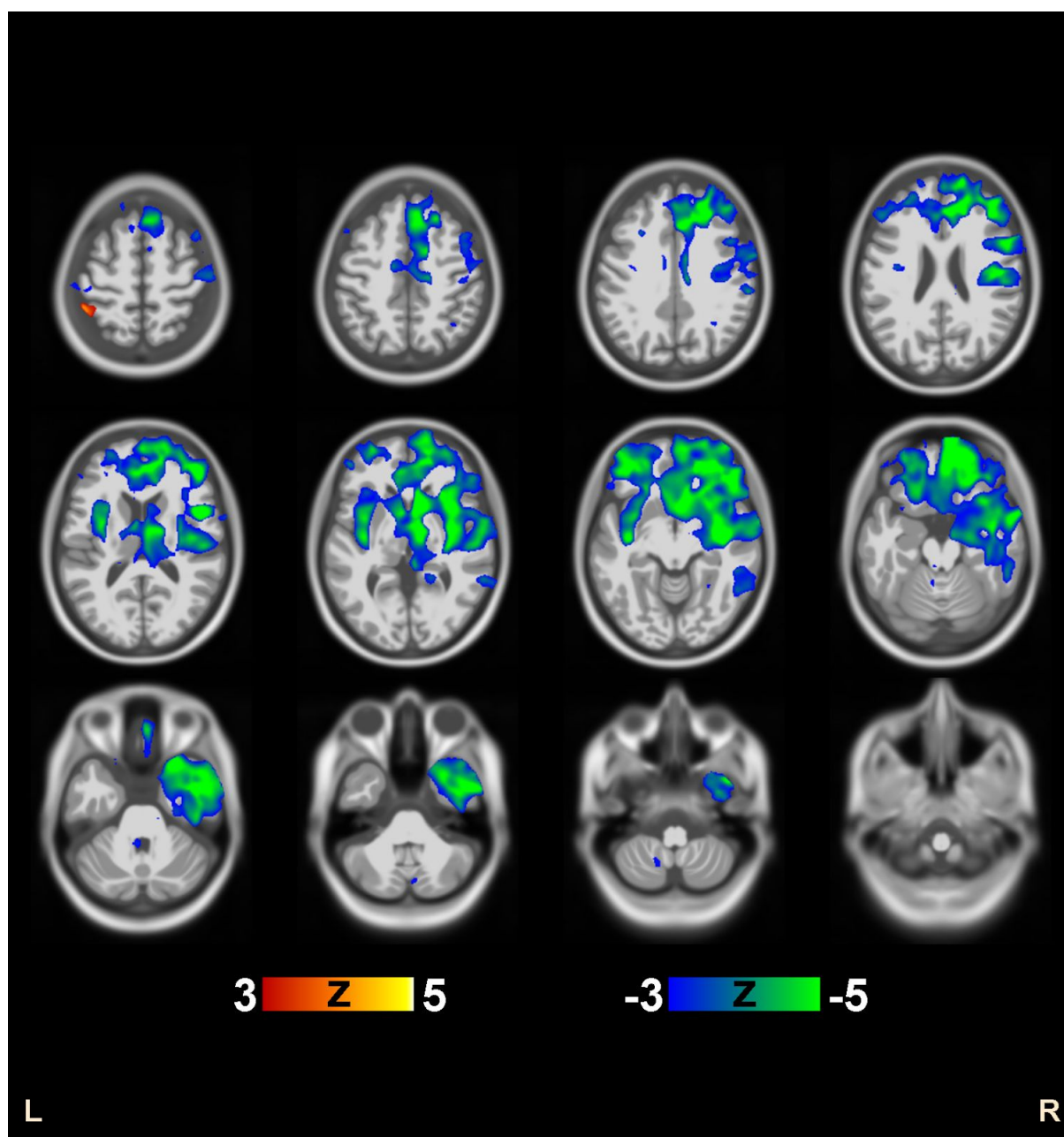


Figure 5 c: Transverse view of the image shown in Figure 5.

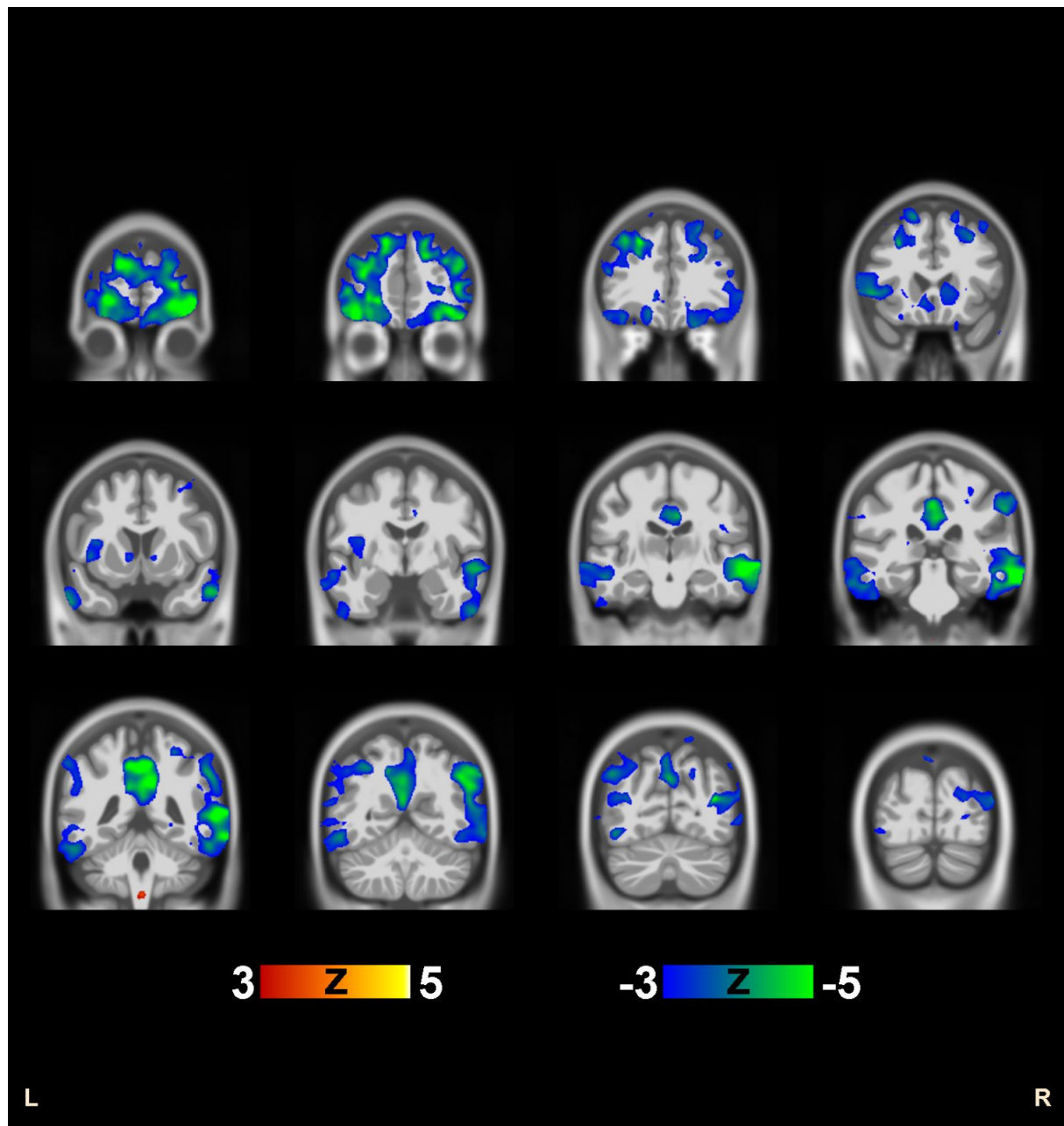


Figure 6 b: Coronal view of the image shown in Figure 6.

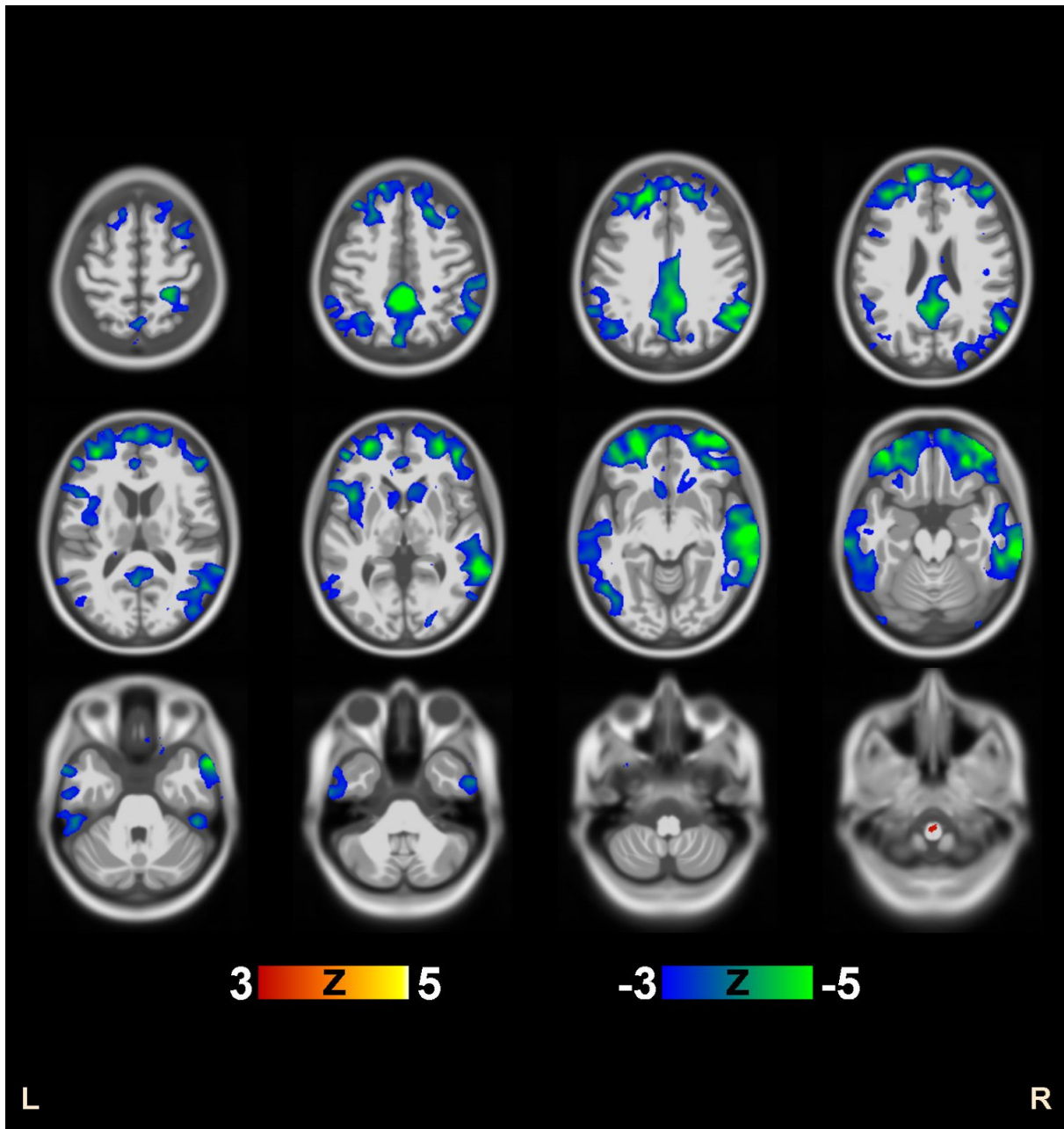


Figure 6 c: Transverse view of the image shown in Figure 6.

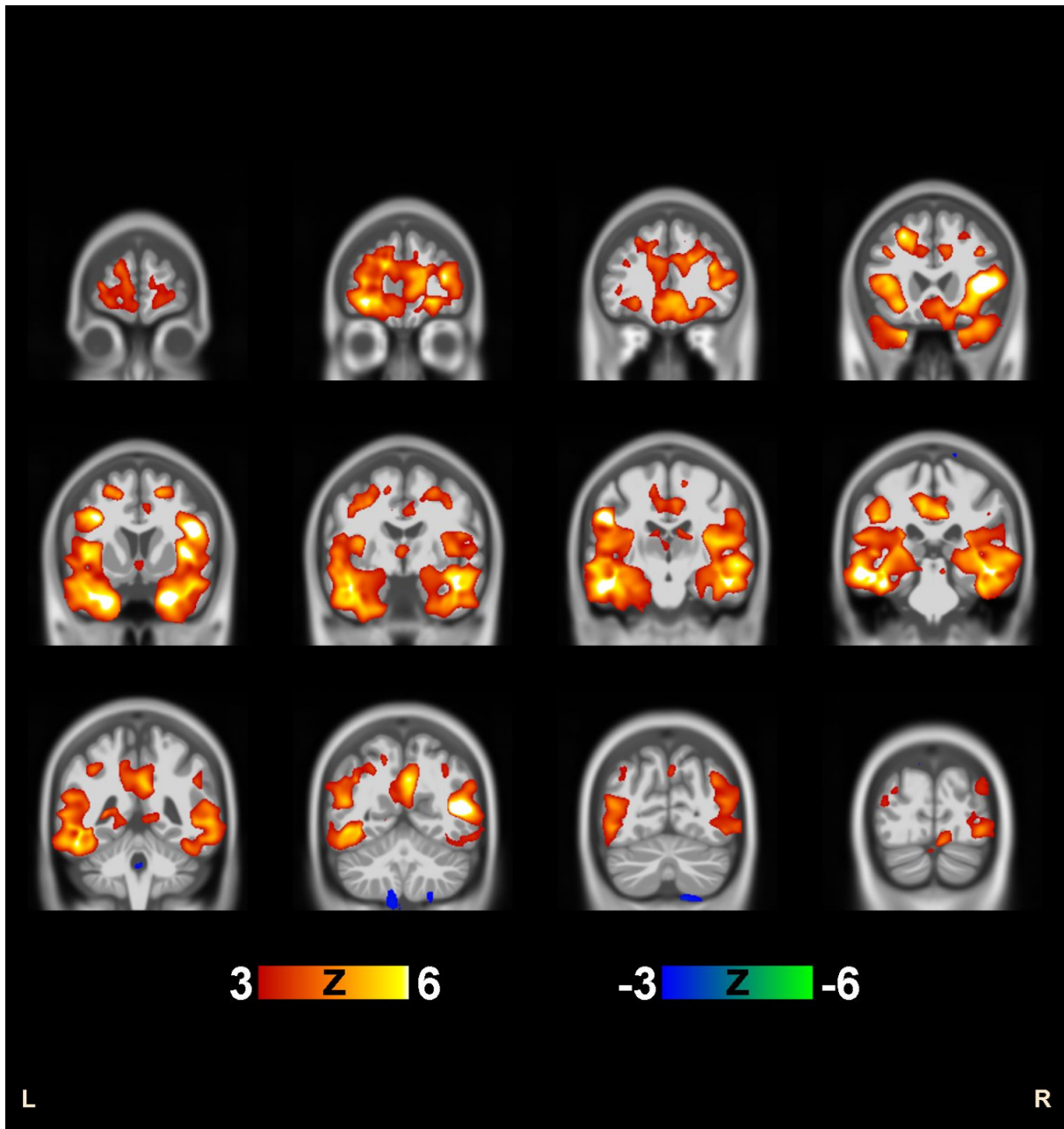


Figure 7 b: Coronal view of the MRIs in Figure 7.

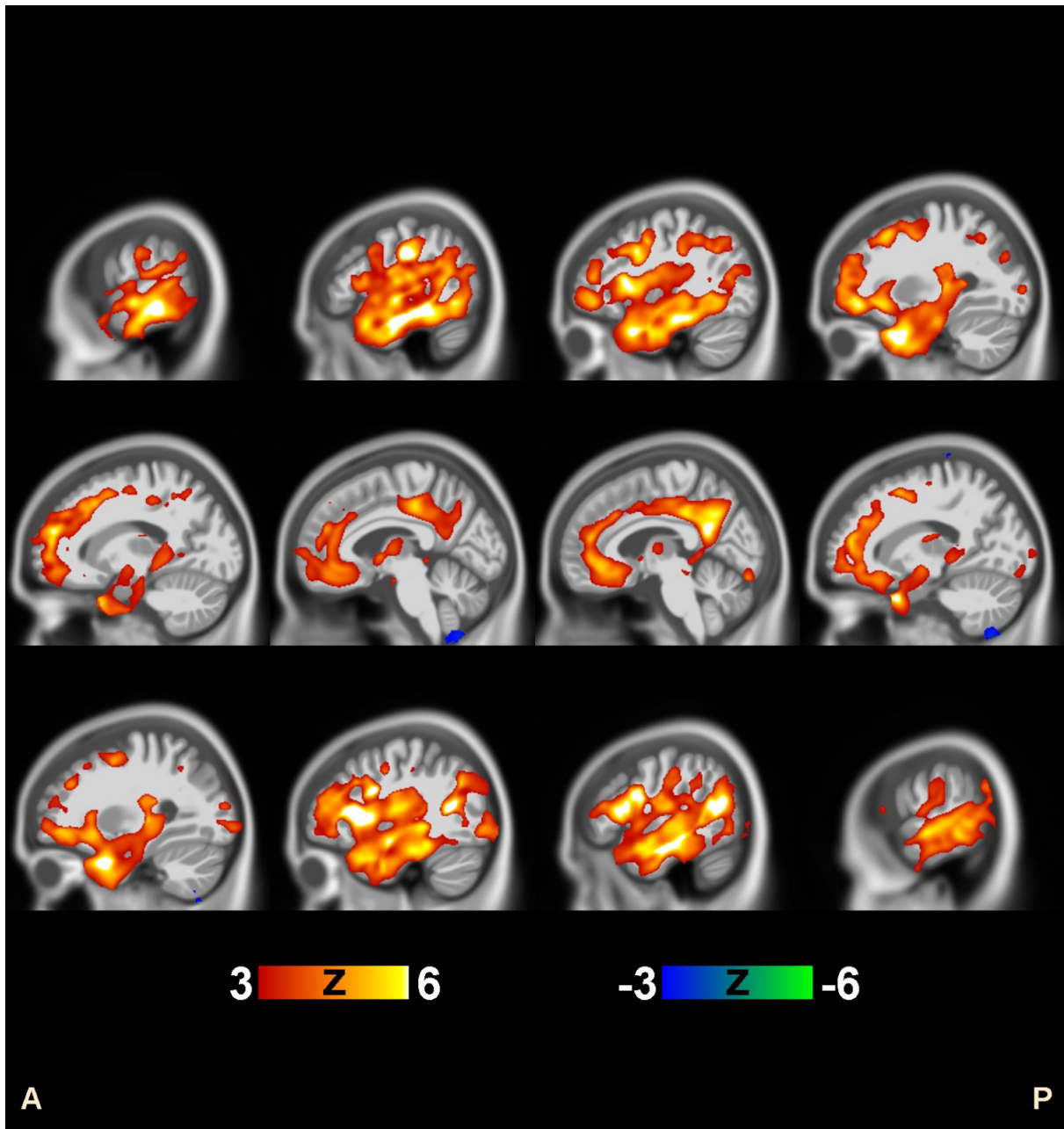


Figure 7 c: Sagittal view of the MRIs in Figure 7.

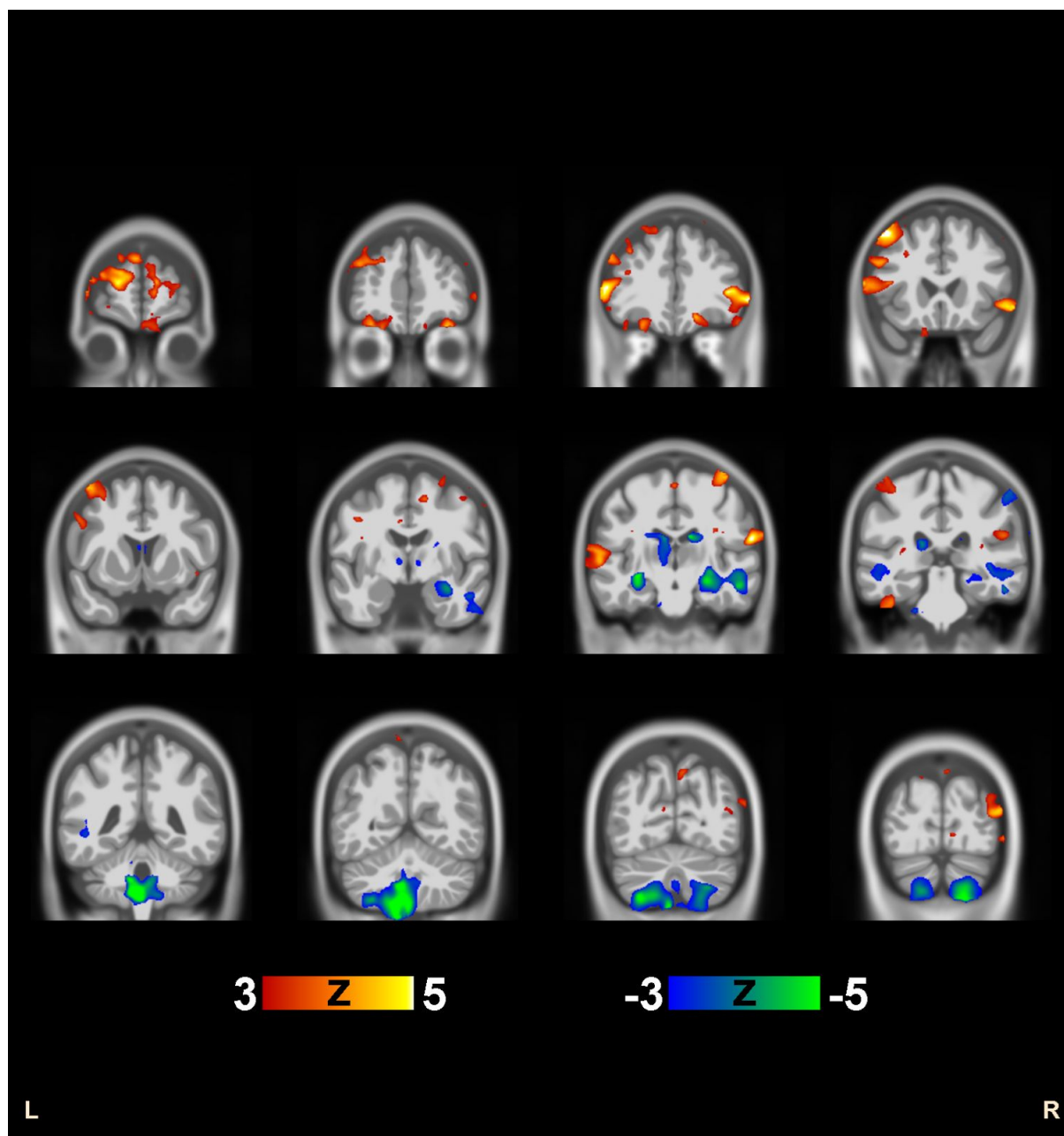


Figure 8 b: Coronal view of the MRIs in Figure 8.

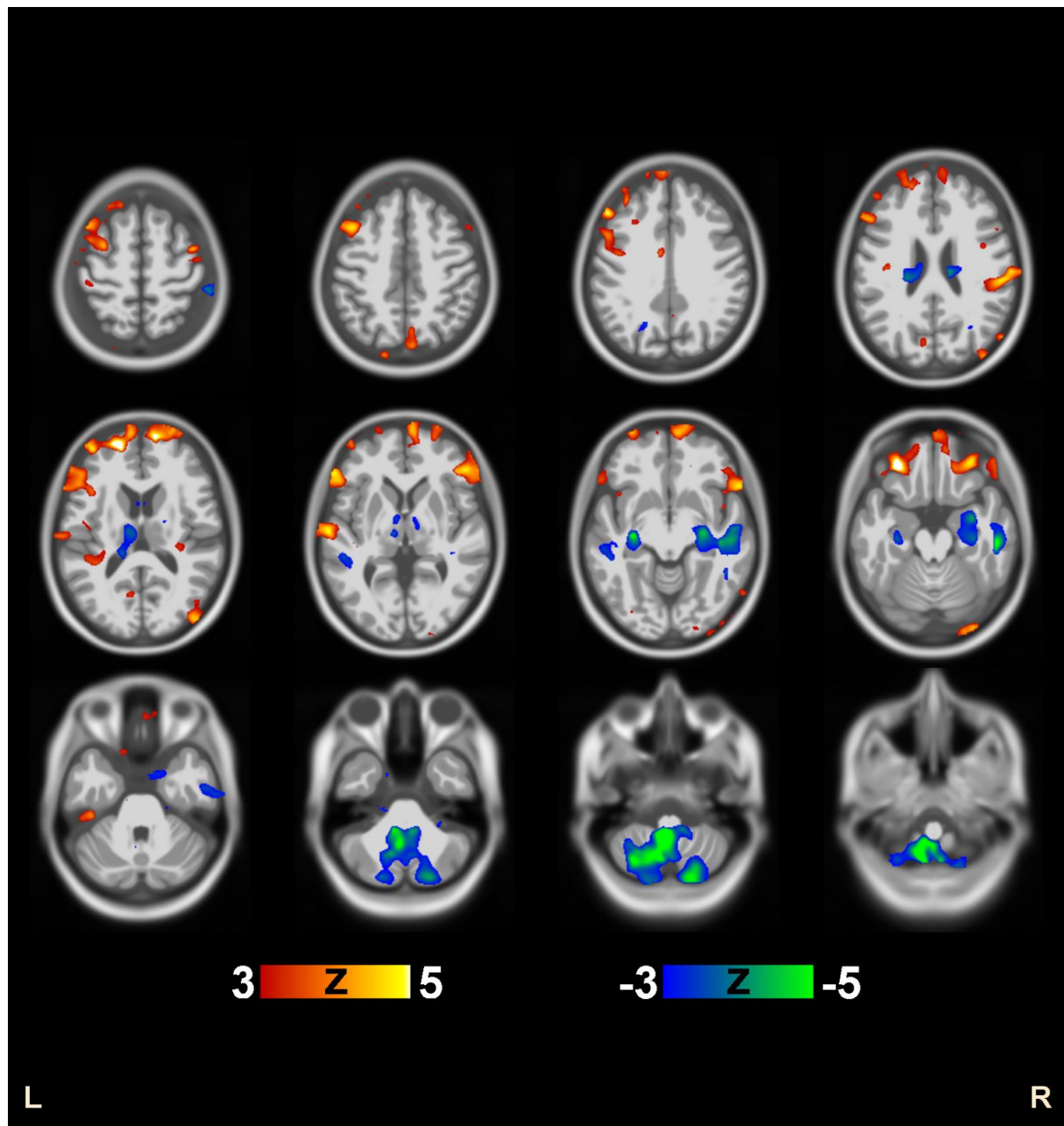


Figure 8 c: Transverse view of the MRIs in Figure 8.

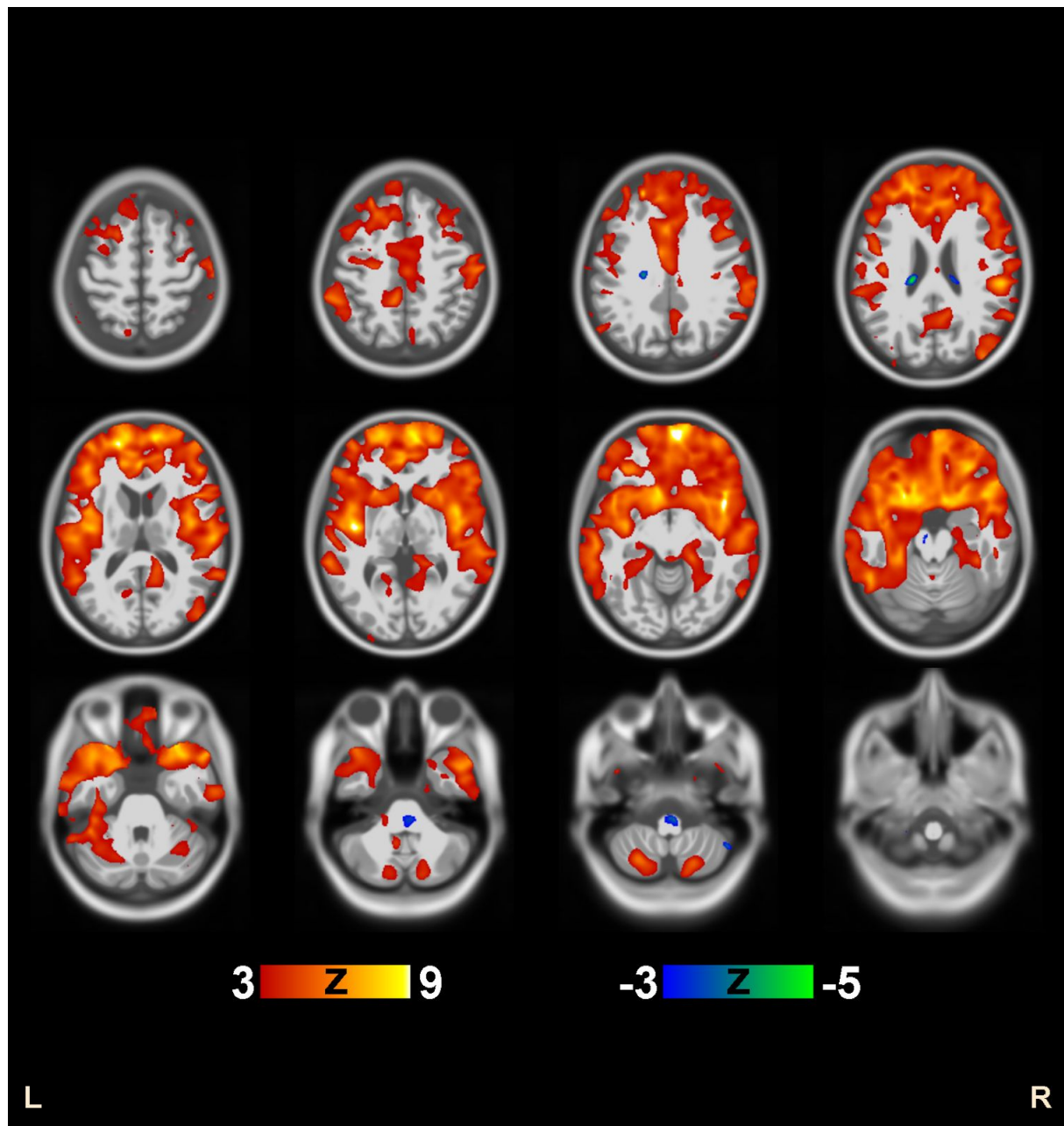


Figure 9 b: Transverse view of the MRIs in Figure 9.

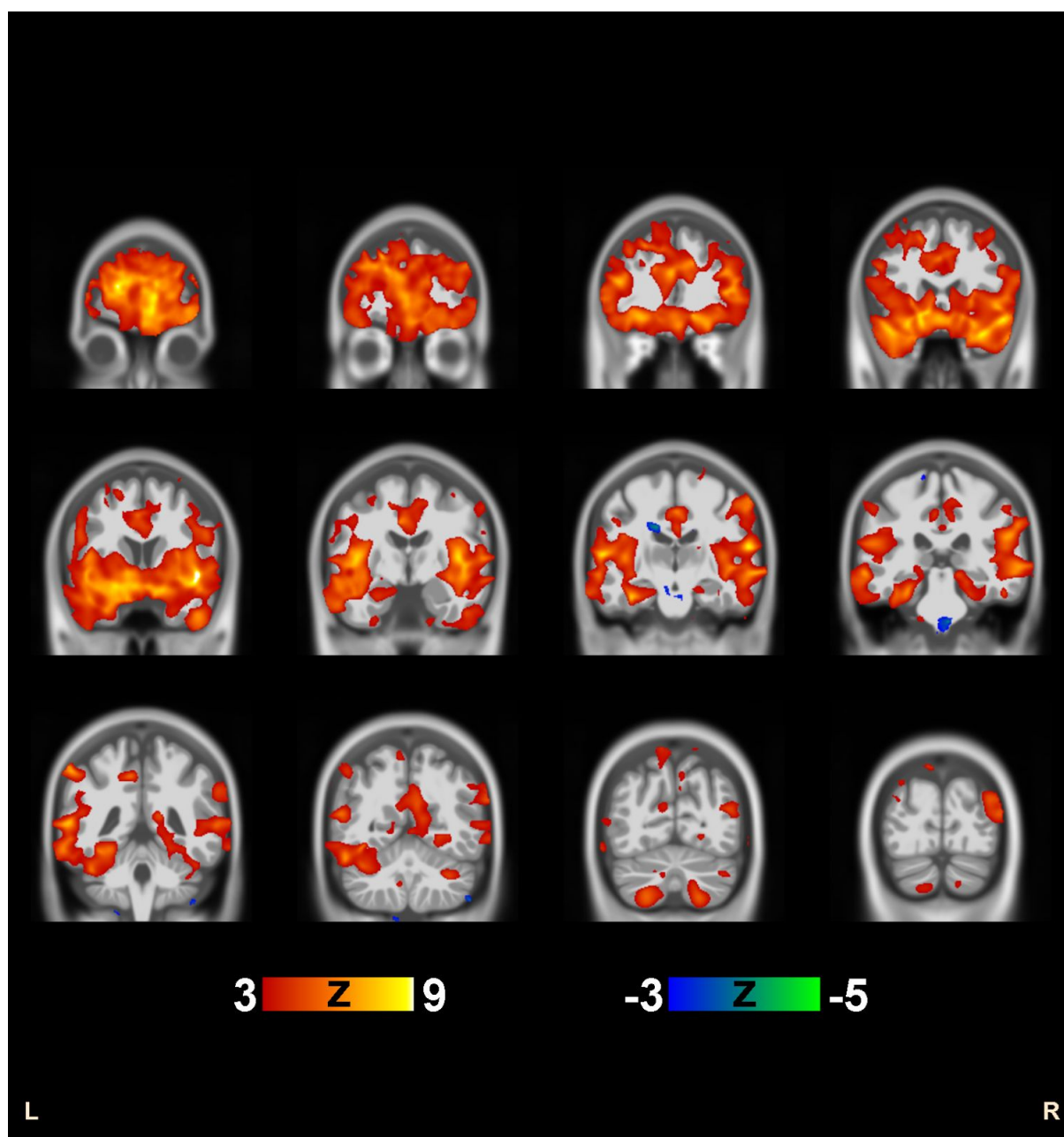


Figure 9 c: Coronal view of the MRIs in Figure 9.

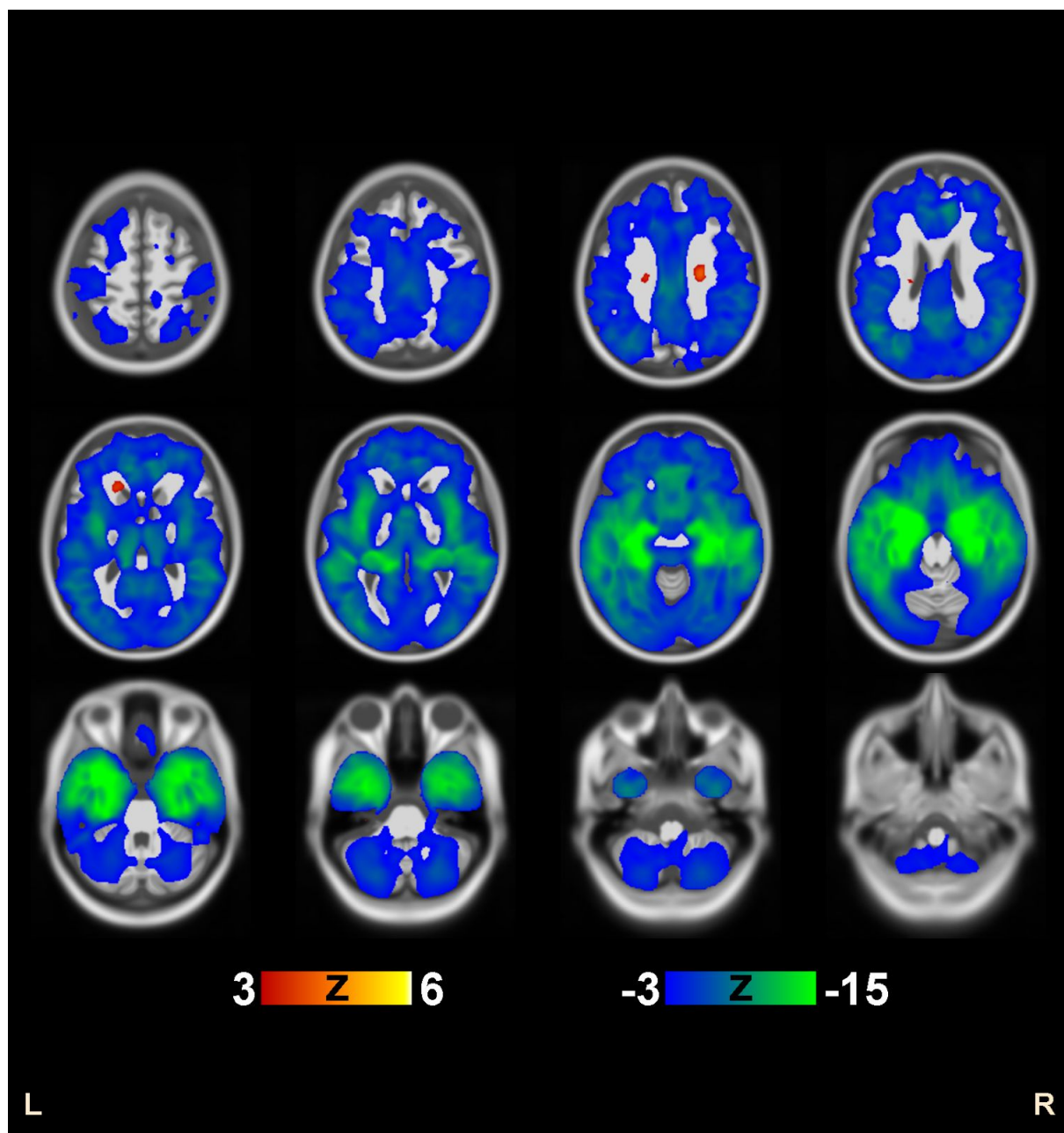


Figure 11: Clusters 1-4 from Table 3 (typical AD) are compared with normal controls (NC). Transverse view, FDR value is 0.000502.

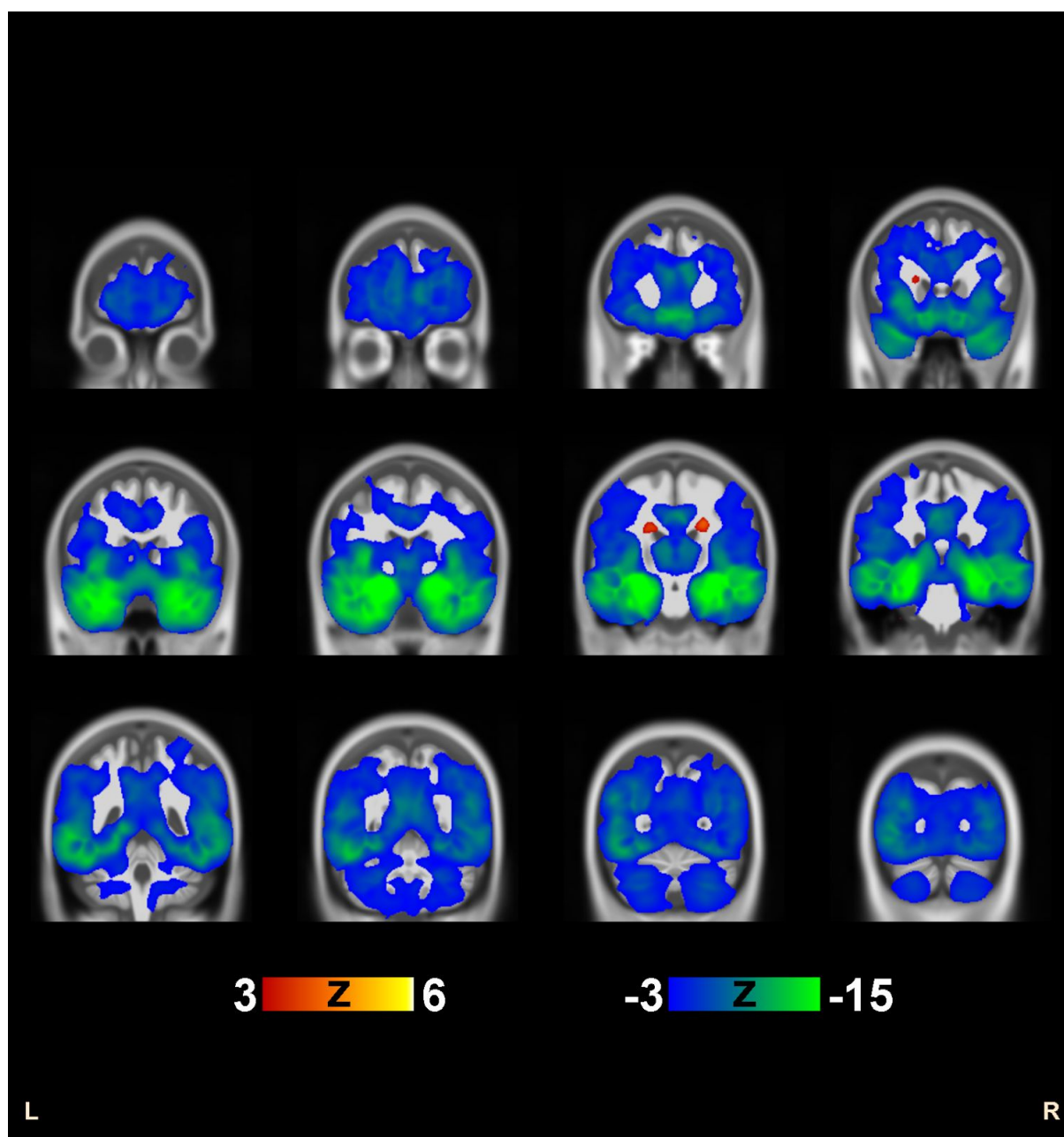


Figure 12: Clusters 1-4 from Table 3 (typical AD) are compared with normal controls (NC). Coronal view, FDR value is 0.000502.

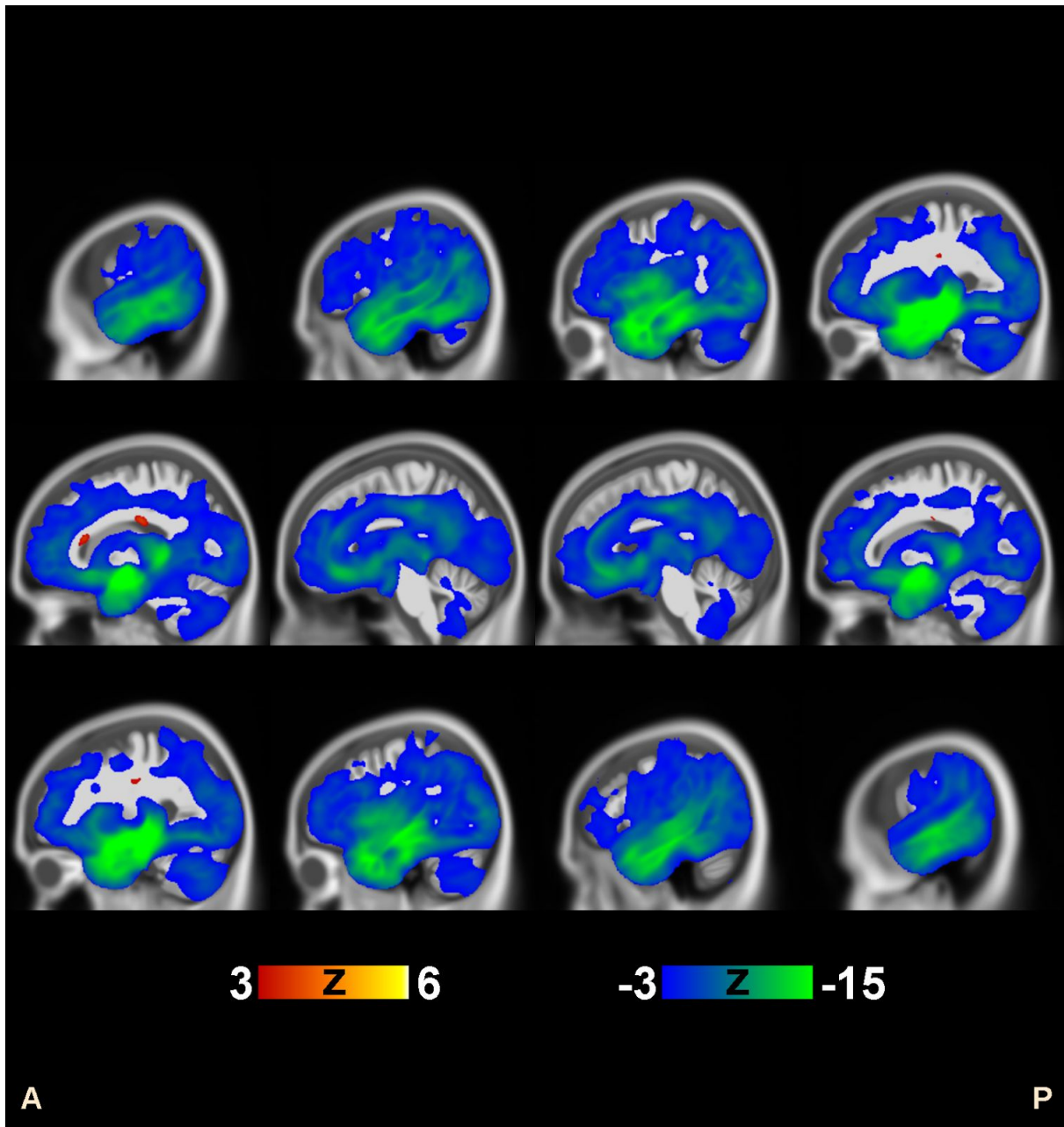


Figure 13: Clusters 1-4 from Table 3 (typical AD) are compared with normal controls (NC). Sagittal view, FDR value is 0.000502.