


Research Article

Economic Spectrofluorometric Bioanalysis of Empagliflozin in Rats' Plasma

Bassam Ayoub ^{1,2} **Noha El Zahar**,^{3,4} **Haidy Michel**,⁵ and **Mariam Tadros**³

¹Pharmaceutical Chemistry Department, Faculty of Pharmacy, The British University in Egypt, ElSherouk City, Cairo 11837, Egypt

²The Center for Drug Research and Development (CDRD), Faculty of Pharmacy, The British University in Egypt, ElSherouk City, Cairo 11837, Egypt

³Pharmaceutical Analytical Chemistry Department, Faculty of Pharmacy, Ain Shams University, Organization of African Unity Street, Abassia, Cairo 11566, Egypt

⁴Medicinal Chemistry Department, Faculty of Pharmacy, King Salman International University, Eas-Sedr, South Sinai, Egypt

⁵Pharmacology and Toxicology Department, Faculty of Pharmacy, Ain Shams University, Organization of African Unity Street, Abassia, Cairo 11566, Egypt

Correspondence should be addressed to Bassam Ayoub; bassam.ayoub@bue.edu.eg

Received 4 March 2021; Revised 11 April 2021; Accepted 29 April 2021; Published 11 May 2021

Academic Editor: Tien Duc Pham

Copyright © 2021 Bassam Ayoub et al. This is an open access article distributed under the Creative Commons Attribution License, which permits unrestricted use, distribution, and reproduction in any medium, provided the original work is properly cited.

A simple, economic, green, and sensitive bioanalytical method for empagliflozin bioassay in rats' plasma was employed successfully owing to the empagliflozin native fluorescence behavior. Enhanced liquid-liquid extraction, using diethyl ether (DEE), was successfully employed for the improved extraction of empagliflozin from rats' plasma based on its high value of logP as 1.8 that boosted the drug migration from plasma to the organic layer. The relative fluorescence intensity for empagliflozin was recorded at emission (299.4 nm) after excitation at 226.5 nm. The method was validated with satisfactory results for linearity (500–5000 ng/mL), trueness, precision, the matrix effect, and extraction recovery. The matrix effect ranged between 15.63% and 23.10% for LQC and HQC samples, respectively. Extraction recovery ranged between 54.61% and 62.54% for LQC and HQC samples, respectively. Bias values for the trueness ranged between –10.62 and +14.95, while %RSD values for the precision ranged between 5.39% and 9.33%. The method was successfully applied to rats' plasma samples that included six rats, and the drug concentration was determined in their plasma after 1 hour (estimated C_{max} based on literature) following oral administration of empagliflozin with a concentration of 10 mg/Kg, p.o.. The developed cost-effective spectrofluorimetric method in the present work will be of beneficial use in further pharmacokinetic studies that include rats' plasma and biological fluids. Moreover, with the suitable modifications, the described novel extraction of empagliflozin could be adopted to human plasma samples and future clinical studies. Moreover, development of new simple cost-effective methods is necessary to give the researchers a set of “varieties” that they can use according to the laboratory limitations, especially in the developing countries in addition of being a greener method due to the lower consumption of toxic solvents and lower waste production.

1. Introduction

Type 2 diabetes is increasing in predominance worldwide with its major serious complications despite the diverse therapeutic strategies. Furthermore, the foremost cause of morbidity and mortality for the type 2 diabetes patients is due to cardiovascular diseases [1, 2]. Sodium glucose linked transporter 2 inhibitors (SGLT2i) are cutting edge class of

drugs for the management of type 2 diabetes proposing an original insulin-independent mechanism for refining the blood glucose levels [3, 4]. Empagliflozin (EFN) is one of the highly specific SGLT2i that induces glycosuria. It improves the blood glucose levels as an antidiabetic with promising HbA1c reduction results over the long term, better body-weight control, and significant improvements in microvascular outcomes [5]. Moreover, EFN ameliorates

endothelial dysfunction, reduces vascular damage and progression of heart failure, and suppresses atherogenesis with future considerations as a pluripotent drug [6, 7]. EFN, used as a monotherapy or add-on therapy to other anti-hyperglycaemic drugs, is well tolerated and rapidly absorbed following oral administration [8].

Many chromatographic methods with UV and mass detection were reported for the assay of EFN in pharmaceutical dosage form and biological fluids either alone or in combination with linagliptin, metformin, and/or other antidiabetics [9–26]. Yet, they lack of being simple, fast, and cost-effective approaches due to the required costly complex instrumentation and time-consuming multipart analytical procedures. In addition, a voltammetry method has been reported for the analysis and bioanalysis of EFN in pharmaceutical dosage form and human urine [27]. Spectrophotometric and chemometric methods were reported for EFN by the first author [28], but those methods missed the known higher sensitivity output of the spectrofluorometric analysis. The purpose of the current investigation is to provide a new greener bioanalytical method for the determination of EFN in rats' plasma with full detailed validation according to the FDA guidelines as an alternative for the high cost methods described in the literature with the possible reduced cost advantage.

Fluorescence is the most common and useful type of photoluminescence in analytical chemistry. Spectrofluorometric technique exhibits extremely high sensitivity, which can be applied to the detection of a very wide range of analytes in environmental and biological samples, especially in case of the native fluorescence of the drug without the need for the pretreatment derivatization or modification. Its capacity of detection is approximately one order of magnitude greater than that of molecular absorption spectroscopy, and its selectivity is clearly greater than that of other spectroscopic methods. Accordingly, spectrofluorometry has been applied for the analysis of different analytes in complex matrices [29–31]. Furthermore, in the developing countries (that include Egypt), the application of spectrofluorometry in bioanalysis continues to be popular due to the simplicity, the common availability of the instrumentation, and the low cost without the need of costly infrastructure that is not applicable in QC labs with limited fund.

Although two spectrofluorometric analytical procedures were described for EFN [32, 33], one of them was based on EFN derivatization before its determination in human plasma [32], while the other synchronous method did not consider its application to biological fluids and/or rats' plasma samples [33]. That defines the current study as the "first" spectrofluorometric method for EFN bioanalysis in rats' plasma based on its native fluorescence. In the current investigation, a simple spectrofluorometric method was described for the accurate and precise determination of EFN (Figure 1) in rats' plasma. FDA guidelines [34] were applied for the whole method development and bioanalytical validation including selectivity, linearity, trueness, interday and intraday precision, dilution integrity, extraction recovery, the matrix effect, and stability studies. This study will be of interest for pharmaceutical industry and researchers

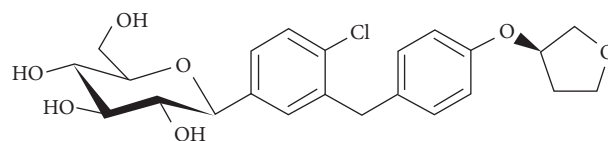


FIGURE 1: Chemical structure of empagliflozin (EFN).

working in the QC area of pharmaceutical analysis and bioanalysis.

2. Materials and Methods

Shimadzu spectrofluorometer, RF-6000 model R928 photomultiplier, 3D measurement function, with 1 cm quartz cuvettes (Kyoto, Japan), controlled from a PC using the Lab Solution RF software for Windows (Rev.B.04.01, Shimadzu), was used. The temperature of the sample cuvette while taking measurement was left uncontrolled at room temperature. EFN certified to contain 99.7% and rats' plasma were "thankfully" supplied as a gift from the Center for Drug Research and Development (CDRD, the British University in Egypt). Analytical grade methanol was purchased from Sigma Aldrich (Germany).

Standard stock solution of EFN (1 mg/mL) was prepared in methanol; then, standard and quality control (QC) working solutions with different concentrations were prepared in methanol (100, 200, 400, 500, 600, 800, and 1000 $\mu\text{g}/\text{mL}$). 10 μL of each one of the prepared working solutions was used to spike 1990 μL blank plasma to prepare calibration and QC samples with final concentrations of 500 (LQC), 1000, 2000, 2500 (MQC), 3000, 4000, and 5000 (HQC) ng/mL (for studying linearity, trueness, and precision).

2.1. Regarding Spiked and Real Samples Preparation. Two millilitres of rats' plasma was liquid-liquid extracted using 6 mL of diethyl ether (and the whole method was repeated with another 6 mL at the end), vortexed for 1 min, centrifuged for 30 min at 6000 rpm (2,817 \times g), and frozen. Then, the upper organic DEE layer was separated and evaporated using a vacuum concentrator at 50°C for 20 min till dryness. The EFN extracted samples were then reconstituted with 2 mL of methanol, vortexed, and then transferred into the cuvette. The relative fluorescence intensity for EFN-extracted samples was recorded at λ emission (299.4 nm) after λ excitation at 226.5 nm. The biological samples were constantly maintained at -20°C until use, and the calibration and QC samples were freshly prepared every day.

2.2. Regarding the Animal Study. Six Sprague–Dawley rats received EFN (10 mg/Kg, p.o.) dissolved in saline and sodium lauryl sulphate as surfactant. It is worthy to mention that using sodium lauryl sulphate was necessary because of the high lipophilic nature of empagliflozin to ensure its dissolution efficiently. One hour later (estimated C_{max} based on literature following oral administration in rats [14]), blood samples were collected from the retroorbital

plexus and treated with anticoagulant (heparin at a final concentration of 1 U/mL and EDTA at a final concentration of 1 mg/mL). Plasma (2 mL) was separated by centrifugation at 1000 rpm ($78 \times g$) for 10 min and then used for the assessment of the EFN level as described in the sample preparation. EFN dose was calculated based on reported doses and human to animal dose conversions with full consideration to the differences in the surface area between species [35]. This study was approved by the British University in Egypt Faculty of Pharmacy Ethical Committee (code: EX-2008, approved on 9 December 2020). The mentioned ethical committee is recognized by ENREC (Egyptian Network of Research Ethics Committees), <http://www.enrec.org/directory>. Finally, the extracted plasma samples were frozen and stored until use.

2.3. Regarding Bioanalytical Method Validation and Stability Studies. Bioanalytical method validation was achieved in agreement with the FDA guidelines. The selectivity of the method was evaluated by comparing the extracted EFN emission spectra at 500 ng/mL with blank plasma. Six different batches of blank rats' plasma (from 6 different rats) donated from CDRD-BUE were checked for interference as a measure of selectivity. The linearity was detected using calibration standard samples within the range of 500–5000 ng/mL. The relative fluorescence intensity was used against concentrations to predict the calibration curve and the regression equation. EFN concentrations were calculated using the corresponding regression equation to check the trueness of the method. The trueness of the method denoted the closeness of a measured value to the actual one and was estimated as recovery percent ($R\%$). To check the precision displaying the closeness of multiple samples measurements exhibiting the same concentration, QC samples were assayed three times ($n = 3$) within the same day to assess the intraday precision, while interday precision was assessed on three successive days ($n = 3$). Both intraday and interday percent relative standard deviations (%RSD) were calculated. Moreover, the effect of the matrix on the response was computed as the ratio of the relative fluorescence intensities arisen from recording the spectra of postpreparation EFN-spiked samples to that of the corresponding neat solutions. The extraction recovery was assessed from the ratio of the relative fluorescence intensities arisen from recording the spectra EFN spiked samples to the postpreparation spiked samples.

Evaluating the small but deliberate changes that could occur during the routine analysis was carried out through the assessment of the method robustness. Robustness was checked at 500 ng/mL through a slight variation in λ excitation at 226 nm and then by %RSD calculation. The dilution integrity experiment for the rats' plasma method was carried out at 5 times and 10 times dilution of the high concentration samples (10 $\mu\text{g/mL}$), and the corresponding concentrations were calculated. The used high concentration was higher than the upper limit of quantification. The percentage change from the comparison sample should be within $\pm 15\%$. Stability of LQC and HQC was estimated

based on 4 different bioassays after leaving the samples 3 h in the cuvette or leaving them 3 h at room temperature (bench top short-term stability) or analyzing them after three complete cycles (each cycle for two weeks) of both freeze and thaw. Finally, stability for the long-term stability was investigated by checking the samples after two weeks while freezing at -80°C . The four adopted stability studies were conducted as per FDA guidelines.

3. Results and Discussion

First, working on bioanalysis of recently approved antidiabetics provides valuable information about the behavior of the drugs in biological fluids either plasma samples or the other biological tissues such as brain tissue and/or urine samples. More applications could be developed using such information (like logP and enhanced extraction, for example) with outstanding outcomes up to even the repurposing of the antidiabetic drug for other uses in case of BBB crossing or other valuable behavior in biological fluids [36]. The proposed spectrofluorometric method was effectively applied for the determination of EFN in rats' plasma. To achieve the highest sensitivity and the finest peak shape, different parameters were raised. Upon a 3D scan, wavelengths were denoted, and the emission spectrum was obtained by scanning the emission monochromator at various λ emission, at a particular λ excitation. Eventually, the fluorescence intensity for EFN was best recorded at λ emission (299.4 nm) after λ excitation at 226.5 nm as shown in Figure 2. The scan speed, data interval, and the excitation and emission bandwidths were 600 nm/min, 0.2, and 15 nm, respectively. Moreover, among several tested diluting solvents, methanol showed the utmost relative fluorescence intensities [33].

Sample preparation had been enhanced to accomplish adequate recovery and the matrix effect. Studying EFN polarity and XlogP3-AA (=2) [37], protein precipitation and liquid-liquid extraction were evaluated for the plasma extraction. However, protein precipitation did not achieve the anticipated recoveries. Protein precipitation reported drawbacks [38], such as the long time taken for the evaporation and dryness phases, the quiet presence of remaining impurities in the samples, and the further needed clean-up, were inevitable in this study. While implementing the preliminary investigations with the current spectrofluorometric approach, protein precipitation using acetonitrile (4 times the plasma volume) showed inaccurate determinations. Many nonlinear results and even interference from blank plasma samples were noticed which may be attributed to the EFN high logP value. Moreover, using perchloric acid as the precipitating agent also failed to show satisfying results.

Liquid-liquid extraction was successfully applied for EFN plasma extraction achieving the best sensitivity, trueness, and recovery. It was assessed with different solvents such as ethyl acetate, DEE, and hexane and after the addition of different pH ranges buffers. Phosphate buffer (0.2 M, pH 3–10), acetate buffer (0.2 M, pH 3–5), and borate buffer (0.2 M, pH 8–10) solutions were used with the different

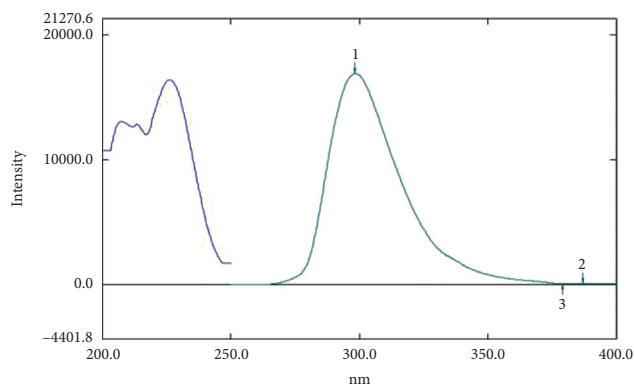


FIGURE 2: Fluorescence intensity for neat sample of EFN (750 ng/mL) in methanol at emission (299.4 nm) after excitation at 226.5 nm.

mentioned extracting solvents in a trial to enhance the extraction procedure. Finally, the lower limit of quantification (LLOQ) was identified using the DEE that provided the cleanest extract and the highest recovery, while the other solvents showed lower efficiency to extract EFN (using the spectrofluorometric approach), while no difference was noticed upon the buffer addition. Using ethyl acetate and hexane showed the matrix effect of 25% and 28%, respectively, and both are higher than the average matrix effect (19.4%) received from DEE. In addition, both ethyl acetate and hexane showed recoveries below 50%, so they were excluded from the extraction parameters, especially no significant difference was detected (2–4%) after the addition of different buffers (either phosphate or acetate or borate). Consequently, liquid-liquid extraction, using DEE, was successfully used for the enhanced extraction of EFN from rats' plasma based on its high value of logP as 1.8 that enhanced the drug migration from plasma to the organic layer.

The relative fluorescence intensity for EFN was recorded at λ emission (299.4 nm) after λ excitation at 226.5 nm. Spectrofluorometric bioanalysis provides major advantages over all the chromatographic methods in the literature that include simplicity and the lack of need to prepare the stationary and mobile phases which is time consuming and costly. Moreover, development of new simple cost-effective methods is necessary to give the researchers a set of "varieties" that they can use according to the laboratory limitations, especially in the developing countries in addition of being a greener method due to the lower consumption of toxic solvents and lower waste production.

The developed cost-effective spectrofluorimetric method in the present work will be of beneficial use in further pharmacokinetic studies that include rats' plasma and biological fluids. Moreover, with the suitable modifications, the described novel extraction of EFN can be adopted to human plasma samples and future clinical studies. The developed assay was validated efficaciously according to the FDA guidelines [29]. Good linearity and results were obtained as shown in consecutive increase in the fluorescence intensity (Figure 3) before subtracting the blank value of the

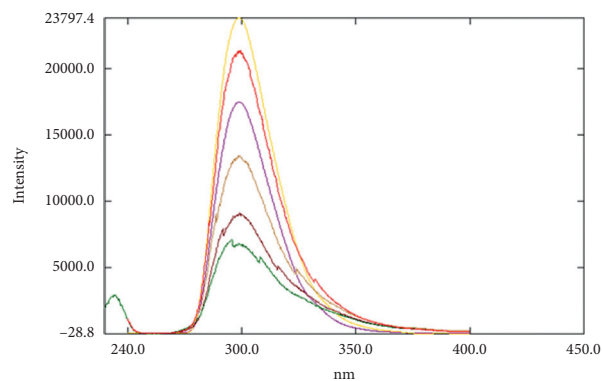


FIGURE 3: Overlay of EFN calibrators (500–5000 ng/mL) at emission (299.4 nm) after excitation at 226.5 nm before subtracting the blank fluorescence intensity to calculate the relative fluorescence intensity for all samples.

blank plasma to calculate the relative fluorescence intensity and as per the following findings. The regression equation was computed and found to be $\text{RFI} = 4.0517 \text{ Conc.} + 3884$, $r^2 = 0.9928$, and $r = 0.9964$, where RFI is the relative fluorescence intensity, r^2 is the regression coefficient, and r is the correlation coefficient (Figure 4). LLOQ was found to be 500 ng/mL experimentally.

The method was validated with satisfactory results enclosing linearity range (500–5000 ng/mL), trueness, precision, the matrix effect, and extraction recovery. Relative bias values for the trueness (relative difference than 100% recovery) ranged between -10.62 and $+11.70$ for LQC, -7.4 and $+5.69$ for MQC, and 11.11 and 14.95 for HQC samples. The percent relative standard deviation (% R.S.D.) values for the precision of QC samples ranged between 5.83% and 9.33% for the interday repeatability, while they ranged between 5.39% and 6.85% for the intraday repeatability. Extraction recovery ranged between 54.61% and 62.54% for LQC and HQC samples, respectively, and the low values of the extraction recoveries may be due to the reported high binding of EFN to plasma proteins. Dilution integrity showed satisfying recoveries either for the five times or ten times dilution samples with bias below 5%, and all stability samples showed recoveries more than 85%, and all these results are compatible with FDA guidelines.

The influence of the matrix on the response was evaluated, and the matrix effect was consistent and ranged between 15.63% and 23.10% for LQC and HQC samples, respectively. Robustness was analyzed at 500 ng/mL with a slight variation in λ excitation at 226 nm, and %RSD showed no significant difference. The low value of %RSD reveals the effective reliability, consistency, and robustness of the adopted method. The method was successfully applied to biological samples that included six rats, and plasma EFN concentration was determined one hour (estimated C_{max} based on literature [14]) after EFN administration (10 mg/Kg, p.o.). The mean and S.D. of the biological samples' concentration were 625.39 ng/mL and 262.48, respectively (Figure 5). The calculated mean

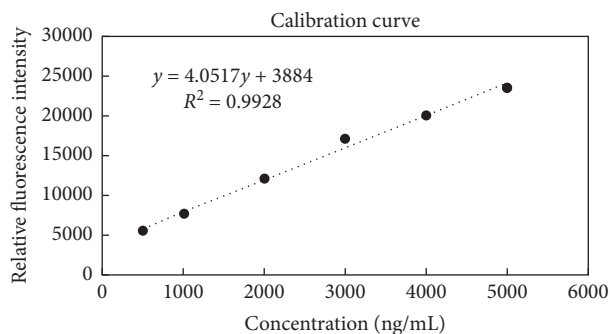


FIGURE 4: EFN calibrators (500–5000 ng/mL) at emission (299.4 nm) after excitation at 226.5 nm after subtracting the blank fluorescence intensity to calculate the relative fluorescence intensity for all samples.

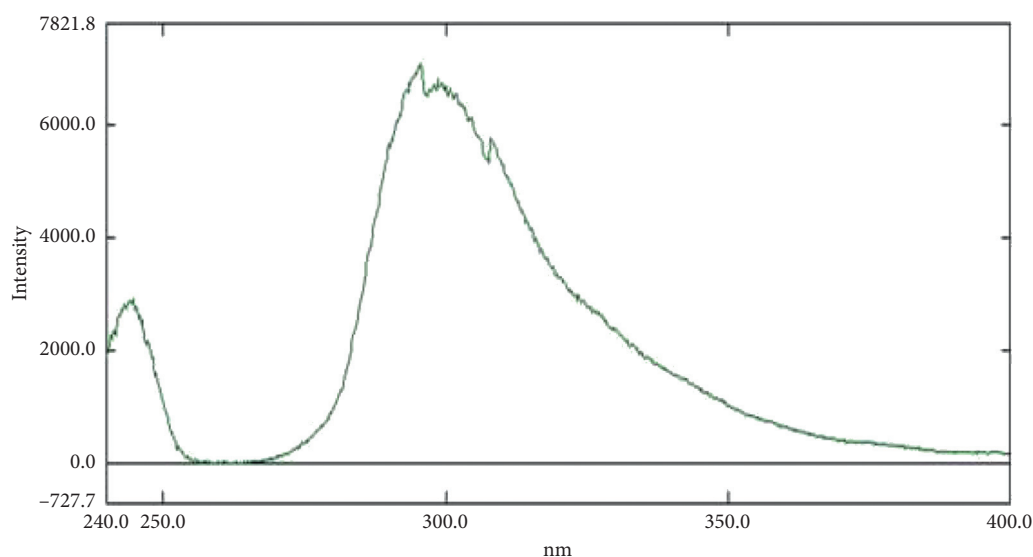


FIGURE 5: Emission spectra of a biological sample at 299.4 nm after excitation at 226.5 nm after 1 hour (estimated C_{max} based on literature [14]) after oral administration of empagliflozin with a concentration of 10 mg/kg.

concentration in biological samples was found within the developed calibration curve from the described underlying investigation.

4. Conclusions

The simple validated and robust spectrofluorometric method was proved to be suitable for EFN determination in rats' plasma using a one-step liquid-liquid extraction. The developed cost-effective bioanalytical method in the present work disclosed good precision, trueness, and linearity, which will be of beneficial use in further pharmacokinetic and preclinical studies. Spectrofluorometric bioanalysis provides major advantages over all the chromatographic methods in the literature that include simplicity and the lack of need to prepare the stationary and mobile phases which is time consuming and costly. Moreover, development of new simple and cost-effective methods is necessary to give the researchers a set of "varieties" to be used according to the laboratory limitations especially in the developing countries in addition of being a greener method due to the lower consumption of toxic solvents and lower waste production.

Data Availability

The data (including figures) used to support the findings of this study are included within the article.

Additional Points

Samples of empagliflozin are available from the CDRD Research Center.

Ethical Approval

The preclinical trial protocol was approved (BUE ethical committee, code: EX-2008, on 9 December 2020). The mentioned ethical committee is recognized by ENREC (Egyptian Network of Research Ethics Committees), <http://www.enrec.org/directory>.

Conflicts of Interest

The authors declare that they have no conflicts of interest.

Authors' Contributions

The authors equally contributed to the present bioanalytical work. All authors have read and agreed to the published version of the article.

References

- [1] J. J. Neumiller, "Empagliflozin: a new sodium-glucose co-transporter 2 (SGLT2) inhibitor for the treatment of type 2 diabetes," *Drugs in Context*, vol. 3, Article ID 212262, 2014.
- [2] J. E. Frampton, "Empagliflozin: a review in type 2 diabetes," *Drugs*, vol. 78, no. 10, pp. 1037–1048, 2018.
- [3] E. Brown, S. P. Rajeev, D. J. Cuthbertson, and J. P. H. Wilding, "A review of the mechanism of action, metabolic profile and haemodynamic effects of sodium-glucose co-transporter-2 inhibitors," *Diabetes, Obesity and Metabolism*, vol. 21, no. S2, pp. 9–18, 2019.
- [4] A. M. Zurek, R. Yendapally, and E. M. Urteaga, "A review of the efficacy and safety of sodium-glucose cotransporter 2 inhibitors: a focus on diabetic ketoacidosis," *Diabetes Spectrum*, vol. 30, no. 2, pp. 137–142, 2017.
- [5] K. M. Munir and S. N. Davis, "Differential pharmacology and clinical utility of empagliflozin in type 2 diabetes," *Clinical Pharmacology: Advances and Applications*, vol. 8, pp. 19–34, 2016.
- [6] B. Ganbaatar, D. Fukuda, M. Shinohara et al., "Empagliflozin ameliorates endothelial dysfunction and suppresses atherogenesis in diabetic apolipoprotein E-deficient mice," *European Journal of Pharmacology*, vol. 875, Article ID 173040, 2020.
- [7] C. Hierro-Bujalance, C. Infante-Garcia, A. Del Marco et al., "Empagliflozin reduces vascular damage and cognitive impairment in a mixed murine model of Alzheimer's disease and type 2 diabetes," *Alzheimer's Research and Therapy*, vol. 12, p. 40, 2020.
- [8] L. J. Scott, "Empagliflozin: a review of its use in patients with type 2 diabetes mellitus," *Drugs*, vol. 74, no. 15, pp. 1769–1784, 2014.
- [9] T. Wattamwar, A. Mungantiwar, S. Halde, and N. Pandita, "Development of simultaneous determination of empagliflozin and metformin in human plasma using liquid chromatography-mass spectrometry and application to pharmacokinetics," *European Journal of Mass Spectrometry*, vol. 26, no. 2, pp. 117–130, 2020.
- [10] M. F. Abdel-Ghany, O. Abdel-Aziz, M. F. Ayad, and M. M. Tadros, "Pharmaceutical analysis of linagliptin and empagliflozin using LC-MS/MS," *Der Pharma Chemica*, vol. 8, pp. 186–189, 2016.
- [11] R. Kant, R. B. Bodla, G. Kapoor, and R. Bhutani, "Optimization of a single HPLC-PDA method for quantifying metformin, gliclazide, pioglitazone, dapagliflozin, empagliflozin, saxagliptin, linagliptin and teneligliptin using central composite design," *Bioorganic Chemistry*, vol. 91, Article ID 103111, 2019.
- [12] M. F. Abdel-Ghany, O. Abdel-Aziz, M. F. Ayad, and M. M. Tadros, "Comparative study between multivariate and univariate analysis of two antidiabetic combinations," *Journal of AOAC International*, vol. 100, no. 5, pp. 1379–1391, 2017.
- [13] S. T. Hassib, E. A. Taha, E. F. Elkady, and G. H. Barakat, "Validated liquid chromatographic method for the determination of (canagliflozin, dapagliflozin or empagliflozin) and metformin in the presence of (1-cyanoguanidine)," *Journal of Chromatographic Science*, vol. 57, no. 8, pp. 697–707, 2019.
- [14] L. Chen, Y. Mao, D. E. Sharp et al., "Pharmacokinetics, biotransformation, distribution and excretion of empagliflozin, a sodium-glucose Co-transporter (SGLT 2) inhibitor, in mice, rats, and dogs," *Journal of Pharmaceutics and Drug Development*, vol. 3, pp. 1–12, 2015.
- [15] P. A. Shah, P. S. Shrivastav, and A. George, "Mixed-mode solid phase extraction combined with LC-MS/MS for determination of empagliflozin and linagliptin in human plasma," *Microchemical Journal*, vol. 145, pp. 523–531, 2019.
- [16] N. S. Thakor, S. V. Amrutkar, and P. D. Chaudhari, "Simultaneous estimation of empagliflozin and metformin by high-performance thin-layer chromatography using quality-by-design approach," *JPC-Journal of Planar Chromatography-Modern TLC*, vol. 32, no. 4, pp. 295–307, 2019.
- [17] S. Donepudi and S. Achanta, "Validated HPLC-UV method for simultaneous estimation of linagliptin and empagliflozin in human plasma," *International Journal of Applied Pharmaceutics*, vol. 10, pp. 56–61, 2018.
- [18] B. M. Ayoub, S. Mowaka, E. S. Elzanfaly, N. Ashoush, M. M. Elmazar, and S. A. Mousa, "Pharmacokinetic evaluation of empagliflozin in healthy Egyptian volunteers using LC-MS/MS and comparison with other ethnic populations," *Scientific Reports*, vol. 7, p. 2583, 2017.
- [19] B. M. Ayoub and S. Mowaka, "LC-MS/MS determination of empagliflozin and metformin," *Journal of Chromatographic Science*, vol. 55, no. 7, pp. 742–747, 2017.
- [20] N. Padmaja and G. Veerabhadram, "A novel stability indicating Rp-Uplc-Dad method for determination of metformin and empagliflozin in bulk and tablet dosage form," *Oriental Journal of Chemistry*, vol. 33, no. 4, pp. 1949–1958, 2017.
- [21] B. M. Ayoub, "UPLC simultaneous determination of empagliflozin, linagliptin and metformin," *RSC Advances*, vol. 5, no. 116, pp. 95703–95709, 2015.
- [22] A. Lakshmana Rao, T. Prasanthi, and E. L. Anusha, "RP-HPLC method development and validation for simultaneous estimation of linagliptin and empagliflozin," *Indian Drugs*, vol. 56, pp. 68–71, 2019.
- [23] B. Ayoub, "Linagliptin: a concise review on analytical and bio-analytical methods," *Der Pharma Chemica*, vol. 8, pp. 23–29, 2016.
- [24] M. Basak, S. R. Gouru, A. Bera, and K. V. Nagappan, "A rapid and sensitive rp-hplc method for the quantitative analysis of empagliflozin in bulk and pharmaceutical dosage form," *International Journal of Applied Pharmaceutics*, vol. 11, pp. 60–65, 2019.
- [25] M. F. Abdel-Ghany, O. Abdel-Aziz, M. F. Ayad, and M. M. Tadros, "New LC-UV methods for pharmaceutical analysis of novel anti-diabetic combinations," *Acta Chromatographica*, vol. 29, no. 4, pp. 448–452, 2017.
- [26] J. W. Manoel, G. B. Primieri, L. M. Bueno et al., "The application of quality by design in the development of the liquid chromatography method to determine empagliflozin in the presence of its organic impurities," *RSC Advances*, vol. 10, no. 12, pp. 7313–7320, 2020.
- [27] M. Rizk, A. K. Attia, H. Y. Mohamed, and M. S. Elshahed, "Validated voltammetric method for the simultaneous determination of anti-diabetic drugs, linagliptin and empagliflozin in bulk, pharmaceutical dosage forms and biological fluids," *Electroanalysis*, vol. 32, no. 8, pp. 1737–1753, 2020.
- [28] B. M. Ayoub, "Development and validation of simple spectrophotometric and chemometric methods for simultaneous determination of empagliflozin and metformin: applied to recently approved pharmaceutical formulation,"

- Spectrochimica Acta Part A: Molecular and Biomolecular Spectroscopy*, vol. 168, pp. 118–122, 2016.
- [29] D. A. Skoog, F. J. Holler, and S. R. Crouch, *Principles of Instrumental Analysis*, Thomson Brooks/Cole, Toronto, Canada, 6th edition, 2007.
- [30] A. M. El-Kosasy, O. Abdel-Aziz, N. Magdy, and N. M. El Zahar, “Screening and optimization of the reaction of polymyxin B sulphate with NBD-Cl for the synchronous spectrofluorimetric determination of polymyxin B sulphate in human plasma,” *Journal of Fluorescence*, vol. 25, no. 3, pp. 695–705, 2015.
- [31] F. A. Ibrahim, M. E. Fathy, and H. M. Elmansi, “Highly sensitive spectrofluorimetric method for rapid determination of orciprenaline in biological fluids and pharmaceuticals,” *Luminescence: The Journal of Biological and Chemical Luminescence*, vol. 34, pp. 77–83, 2019.
- [32] M. A. Omar, H. M. Ahmed, H. A. Batakoushy, and M. A. Abdel Hamid, “New spectrofluorimetric analysis of empagliflozin in its tablets and human plasma using two level full factorial design,” *Spectrochimica Acta Part A: Molecular and Biomolecular Spectroscopy*, vol. 235, p. 118307, 2020.
- [33] M. F. Abdel-Ghany, M. F. Ayad, and M. M. Tadros, “Liquid chromatographic and spectrofluorimetric assays of empagliflozin: applied to degradation kinetic study and content uniformity testing,” *Luminescence*, vol. 33, no. 5, pp. 919–932, 2018.
- [34] FDA, *Bioanalytical Method Validation, Guidance for Industry, U.S. Department of Health and Human Services Food and Drug Administration Center for Drug Evaluation and Research (CDER) Center for Veterinary Medicine (CVM)*, FDA, Silver Spring, MD, USA, 2018, <https://www.fda.gov/regulatory-information/search-fda-guidance-documents/bioanalytical-method-validation-guidance-industry>.
- [35] A. Nair and S. Jacob, “A simple practice guide for dose conversion between animals and human,” *Journal of Basic and Clinical Pharmacy*, vol. 7, no. 2, pp. 27–31, 2016.
- [36] B. M. Ayoub, S. Mowaka, M. M. Safar et al., “Repositioning of omarigliptin as a once-weekly intranasal anti-parkinsonian agent,” *Scientific Reports*, vol. 8, p. 8959, 2018.
- [37] National Center for Biotechnology Information, <https://pubchem.ncbi.nlm.nih.gov/compound/EmpagliflozinPubChem> database. empagliflozin, CID = 11949646, 2020.
- [38] N. M. El Zahar, N. Magdy, A. M. El-Kosasy et al., “Simultaneous determination of tianeptine and its active metabolite tianeptine MC5 in rat plasma and brain tissue using high performance liquid chromatography/electrospray ionization tandem mass spectrometry (LC-ESI-MS/MS),” *Analytical Methods*, vol. 10, no. 4, pp. 439–447, 2018.